



NTEC

Innovation. accelerated. inc

Conference Center

Conveniently located in Frisco at the North Texas Enterprise Center (NTEC) which is the leading technology business accelerator in the Southwest.

All-inclusive half- or full-day pricing with built-in state-of-the-art Audio Visual equipment.

Variety of room arrangements seating up to 180 people.

Attached kitchen area allows for convenient external catering.

Frisco is twenty minutes from DFW and Dallas Love airports, and has 5 million square feet of shopping, professional sports, spectacular public art collections, upscale dining, golf and day spas.

6170 Research Road
Frisco, Texas 75033
972.987.1400

RENTAL TIMES & FEES

Conference Center rental fees are based on half-day or full-day; include all A/V equipment, use of kitchen, reception and catering staging areas:

Half-Day (4 consecutive hours)

\$300 (half room)*

\$500 (full room)*

Full-Day (over 4 consecutive hours)

\$500 (half room)*

\$800 (full room)*

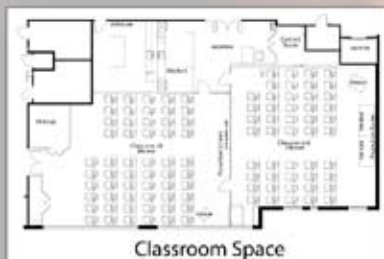
*Security for any time outside NTEC's regular business hours of 8:30am-5:30pm is additional \$35/per hour for building security services).

The Conference Center may be split into two rooms with a sound-resistant movable wall. Each half of the Center has the same A/V equipment and podium with touch-screen GUI for easy operation.

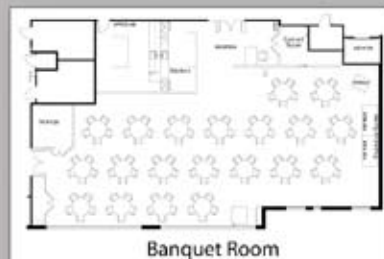
Rental time includes all time used for preparation, decorating and clean-up after the event (from the time the building is opened until time it is closed). Rental hours must be consecutive. If event requires hours that fall outside NTEC's normal business hours (8:30am-5:30pm), a charge of \$35 per additional hour is added to the basic rate (for building security services).

To reserve the Conference Center, contact Jill Hoersten at jhoersten@ntec-inc.org or 972.987.1404.

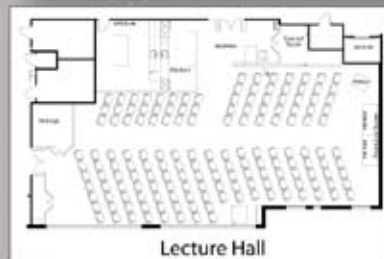
ROOM CONFIGURATIONS



The Conference Center arranged in various configurations. Classroom set-up seats over 100 people (classroom A seats 48 and classroom B seats 56). Lecture set-up seats up to 180. Banquet set-up seats up to 160. "U" Shape seats up to 30.



Maximum capacity is 180 people.



AUDIOVISUAL & SERVICES

Audio Visual

- Ceiling-mounted projectors: commercial-grade, hi-res, wide XGA (1280x800) (Classrooms A, B and Reception)
- Ceiling mounted track lighting for video production of presentations
- High-quality ceiling-mounted speakers
- Lighted podiums and electronic touch-screen GUI for all A/V, light and shade functions
- Powered drop-down 10'x8' projector screens
- Powered black-out shades for all windows
- DVD/Blu-Ray player with Satellite TV
- Separately controllable microphones and wireless lavalier microphones
- State-of-the-art LED lighting controllable in 2% increments
- High bandwidth (T1 speed), commercial-grade wired and wireless internet access at podium and throughout Conference Center
- Separate full-function control room
- 4'x8'x8" speaker risers



Furniture

- Mesh chairs (on casters with arms)
- 71" round tables (seating capacity 6-8 persons per table)
- 72"x18" classroom tables (seating capacity 2-3 persons per table)
- 4'x10' dry erase board mounted in Classroom A
- 4'x6' dry erase board mounted in Classroom B

Food Service Area

- Two full-size refrigerators with filtered water
- Ice machine
- Microwave
- Sink with garbage disposal
- Dishwasher
- Rolling buffet island/bar
- Vending machine for snacks and drinks

Power

- Access to 208v outlets for heavy equipment
- Access to 240v outlets for equipment
- 21 power strips with 24 outlets per strip (can be moved anywhere around Center for guests to power laptops, tablets and other small electronic devices)



NTEC

innovation. accelerated. inc

Conference Center

North Texas Enterprise Center for Technology
6170 Research Road
Frisco, TX 75033
972.987.1400

www.ntec-inc.org/conferenceCenter